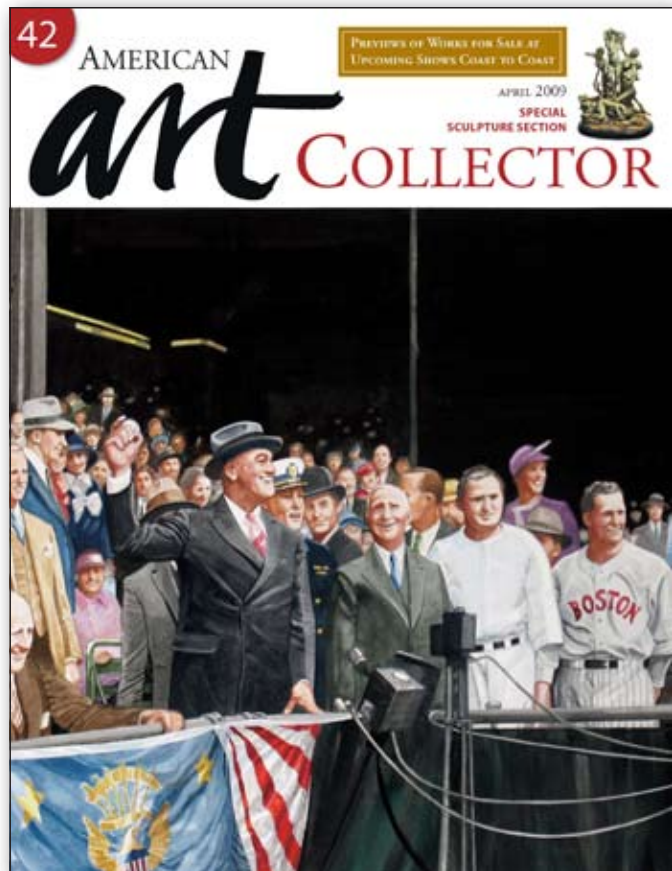


As seen in the  
April 2009 issue of

 AMERICAN  
*art* COLLECTOR





ALEXANDRIA SHOPPE, OIL ON CANVAS, 30 X 30"



NATIONAL GALLERY OF ART – EAST WING GROUND, OIL ON CANVAS, 30 X 30"



WASHINGTON MONUMENT, OIL ON CANVAS, 20 X 16"

## Colors of the Capitol

As an artist, author and world traveler, Diana Hollingsworth Gessler’s formula for inspiration is simple: travel plus color equals joy. Whether in her travel books or on canvas, Gessler is able to capture the heart and soul of a place through intense colors combined with rigorous contrast.

“I love my artist’s life. Working on my fifth book, *Very Washington DC*, we lived just off the National Mall for a month and, of course—this always happens in my travels—I fell in love with the city,” says Gessler. “I am very fortunate that back in my studio, I am able to mentally revisit our Capitol’s treasures by doing hundreds of watercolor illustrations for the book. And now, with the book complete, I am

reliving D.C. all over again through my new collection of oil paintings.”

Gessler’s new works reflect visits to the Capitol in the spring and fall.

Gessler is represented by Shaw Gallery of Bonita Springs and Shaw Gallery of Naples, both in Florida. Shaw Gallery of Bonita Springs will present Gessler’s recent works and host a book signing for *Very Washington DC* on Saturday, April 18, from 6 to 9 p.m.

“Diana’s work exudes life and passion. It is a natural instinct to want to jump into her work and lose yourself in the joys of her world portrayed on canvas. With the magic of her brush, the simplest of things become of great interest and celebration,” says Lisa Pearl of Shaw Gallery. ●

**DIANA HOLLINGSWORTH GESSLER**

**REPRESENTED BY**

Shaw Gallery of Bonita Springs  
8200 Health Center Blvd.,  
Suite 103  
Bonita Springs, FL 34135  
(239) 947-4938  
[www.shawgallery.com](http://www.shawgallery.com)

### Price Range Indicator

*Our at-a-glance Price Range Indicator shows what you can expect to pay for this artist’s work.*

	Small	Medium	Large
2009	\$2,000-\$3,500	\$3,500-\$5,000	\$5,000-\$10,000